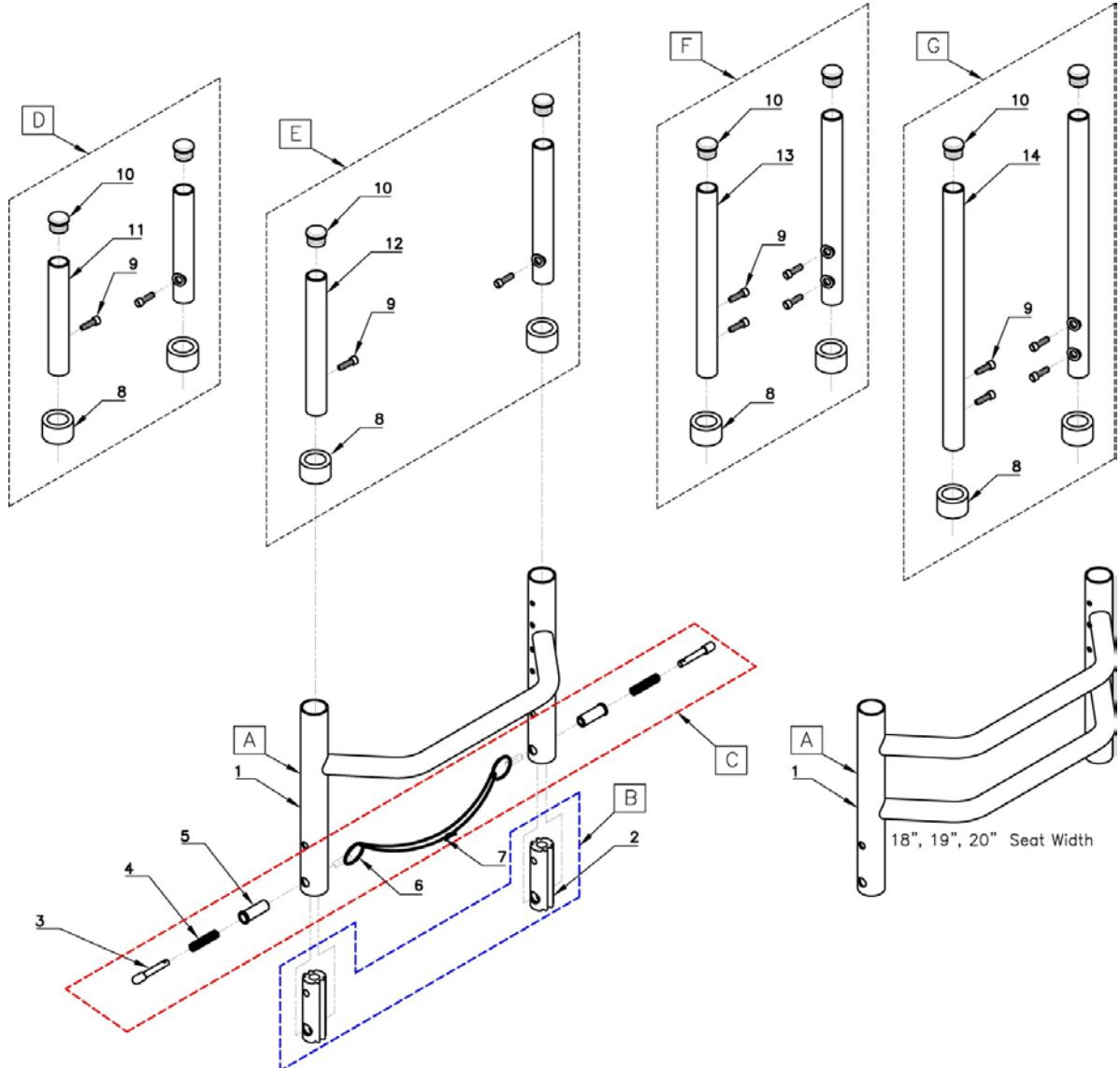


BACKREST



Ver. 1 10/01/12
Section 1900



| POS | Assy # | # | Parts # | QTY | Color | Remark | MSRP | NOTE | POS | Assy # | # | Parts # | QTY | Color | Remark | MSRP | Note |
|-----|----------|----|----------|-----|-------|--------------------------|------------|------------|-----|----------|----|----------|-----|-------|---------------------------|----------|------------|
| A | - | 1 | 0473-300 | 1 | Blk | 10" Seat Width | \$120/1pcs | 1pcs/chair | E | 1900-01E | 8 | 0082-300 | 2 | Blk | Plastic Slip Fit Bushing | \$50/Set | 1set/chair |
| | | | 0473-301 | 1 | Blk | 11" Seat Width | \$120/1pcs | 1pcs/chair | | | 9 | 0261-300 | 2 | Sil | #10-32 L:1/2" SHCS | | |
| | | | 0473-302 | 1 | Blk | 12" Seat Width | \$120/1pcs | 1pcs/chair | | | 10 | 0077-300 | 2 | Blk | Plastic Tubing End Cap | | |
| | | | 0473-303 | 1 | Blk | 13" Seat Width | \$120/1pcs | 1pcs/chair | | | 12 | 0038-311 | 2 | Sil | 13", 14", 15", 16" Height | | |
| | | | 0473-304 | 1 | Blk | 14" Seat Width | \$120/1pcs | 1pcs/chair | | | 8 | 0082-300 | 2 | Blk | Plastic Slip Fit Bushing | | |
| | | | 0473-305 | 1 | Blk | 15" Seat Width | \$120/1pcs | 1pcs/chair | | | 9 | 0261-300 | 4 | Sil | #10-32 L:1/2" SHCS | | |
| | | | 0473-306 | 1 | Blk | 16" Seat Width | \$120/1pcs | 1pcs/chair | | | 10 | 0077-300 | 2 | Blk | Plastic Tubing End Cap | | |
| | | | 0473-307 | 1 | Blk | 17" Seat Width | \$120/1pcs | 1pcs/chair | | | 13 | 0038-312 | 2 | Sil | 17", 18", 19 Height | | |
| | | | 0473-308 | 1 | Blk | 18" Seat Width | \$125/1pcs | 1pcs/chair | | | 8 | 0082-300 | 2 | Blk | Plastic Slip Fit Bushing | | |
| | | | 0473-309 | 1 | Blk | 19" Seat Width | \$125/1pcs | 1pcs/chair | | | 9 | 0261-300 | 4 | Sil | #10-32 L:1/2" SHCS | | |
| B | - | 2 | 0473-100 | 2 | Sil | Backrest Insert | \$25/1pc | 2pcs/chair | F | 1900-01F | 10 | 0077-300 | 2 | Blk | Plastic Tubing End Cap | \$55/Set | 1set/chair |
| | | | 0473-310 | 1 | Blk | 20" Seat Width | \$125/1pcs | 1pcs/chair | | | 13 | 0038-313 | 2 | Sil | 20", 21", 22" Height | | |
| C | 1900-01C | 3 | 0478-120 | 2 | Sil | Pull Pin Plunger | \$142/Set | 1set/chair | G | 1900-01G | 8 | 0082-300 | 2 | Blk | Plastic Slip Fit Bushing | \$55/Set | 1set/chair |
| | | 4 | 0478-110 | 2 | Sil | Pull Pin Spring | | | | | 9 | 0261-300 | 4 | Sil | #10-32 L:1/2" SHCS | | |
| | | 5 | 0478-100 | 2 | Sil | Pull Pin Plunger Sleeve | | | | | 10 | 0077-300 | 2 | Blk | Plastic Tubing End Cap | | |
| | | 6 | 0478-130 | 2 | Sil | Pull Pin Ring | | | | | 12 | 0038-311 | 2 | Sil | 13", 14", 15", 16" Height | | |
| | | 7 | 0294-306 | 1 | Blk | Pull Pin Lanyard | | | | | 8 | 0082-300 | 2 | Blk | Plastic Slip Fit Bushing | | |
| D | 1900-01D | 8 | 0082-300 | 2 | Blk | Plastic Slip Fit Bushing | \$50/Set | 1set/chair | | | 9 | 0261-300 | 2 | Sil | #10-32 L:1/2" SHCS | | |
| | | 9 | 0261-300 | 2 | Sil | #10-32 L:1/2" SHCS | | | | | 10 | 0077-300 | 2 | Blk | Plastic Tubing End Cap | | |
| | | 10 | 0077-300 | 2 | Blk | Plastic Tubing End Cap | | | | | 12 | 0038-311 | 2 | Sil | 13", 14", 15", 16" Height | | |
| | | 11 | 0038-310 | 2 | Sil | 9", 10", 11", 12" Height | | | | | 8 | 0082-300 | 2 | Blk | Plastic Slip Fit Bushing | | |